

# Great Lakes Slender False Brome Working Group Meeting

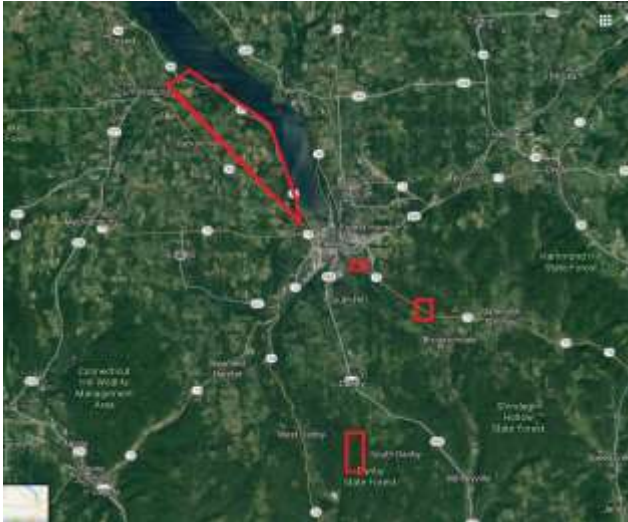
Thursday January 11<sup>th</sup>, 2018. 10:00 AM  
SUNY Brockport, 220 Seymour Union

Time	Topic	Lead
10:00	Introductions	All
10:10	Working Group Updates <ul style="list-style-type: none"> <li>• 2017 Survey Data</li> <li>• 2018 Survey Preparation</li> <li>• Management Study</li> </ul>	Brittany
10:30	DEC Brachypodium Initiatives	Willow
10:45	Bergen Swamp Updates and Future Plans	Andie
11:00	Letchworth & Parks Updates and Future Plans	Meg
11:15	Discussion and Next Steps <ul style="list-style-type: none"> <li>• 2018 Meeting Plan</li> <li>• Website Needs</li> <li>• Identify Education &amp; Outreach Needs</li> <li>• Boot Brush Stations</li> </ul>	All

## 2017 Surveys



## Tompkins County Sites



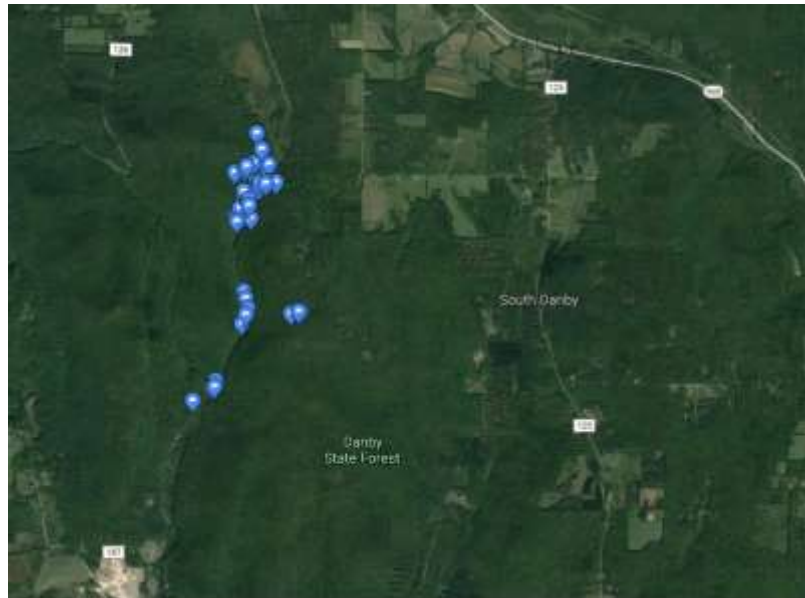
### List of *Brachypodium sylvaticum* Locations Surveyed

- **Taughannock Falls State Park**
  - South & North Rim Trails
  - Gorge Trail
  - Gorge Road
- **Black Diamond Trail**
- **Shindagin State Forest** (Finger Lakes Trail)
- **Stevenson Forest Preserve** (Finger Lakes Trail)
  - Trumbulls Corners Road
- **Bock-Harvey Forest Preserve**
  - Finger Lakes Trail
  - Porter Hill Road
  - Rockwell Road
- **Danby State Forest**
  - Finger Lakes Trail
  - Michigan Hollow Road
  - Bald Hill Road
  - Smiley Hill Road (in progress)
- **Treman State Park** (Finger Lakes Trail)
- **Connecticut Hill Forest**
  - Finger Lakes Trail
  - Bob Cameron Loop
- **Tower Road in Enfield, NY**
- **Cayuga Nature Center**
  - Sugarbush Trail
  - Stream Loop
  - History Loop
  - Habitat Loop
  - Wilderness Loop
- **Willow Creek Point Road**
- Houghton Road
- Perry City Road
- **Agard Road**
- Dubois Road
- Garret Road
- **Jacksonville road**
- **Gorge Road**
- Glenwood Road
- **Ithaca Reservoir**
- **Beebe Lake Loop**
- **Edwards Cliff Nature Preserve**
- **Genung Nature Preserve**
- **Ringwood Nature Areas**
- **Ellis Hollow Nature Preserve**
- **Etna Nature Preserve**
- **Girl Scouts Camp Comstock**
- **Mulholland Wildflower Preserve**
- **Six Mile Creek**
- **Brooktondale Private Property**
- **James Kennedy State Forest**
- **Fillmore Glen State Park**
- **Lime Hollow Nature Center**

## Tompkins County Sites



## Tompkins County Sites



## WNY PRISM Sites

### Genesee County:

- Genesee County Park & Forest
- Drew's Nature Preserve
- Iroquois National Wildlife Refuge.
- Tonawanda Wildlife Management Area.
- Darien Lake State Park
- Oak Orchard Wildlife Management Area
- Dewitt County Recreation Facility
- Trestle Park

### Wyoming County:

- Beaver Meadow Audubon Center
- Ghost Pond Preserve
- Rose Acres
- Silver Lake State Park
- Carlton Hill Multi Use Area
- Letchworth State Park (Surveyed by Parks)
- Genesee Valley Greenway State Park

### Erie County:

- Erie County Bureau of Forestry Park
- Akron Falls
- Boston Forest
- Chestnut Ridge
- Como Lake
- Eighteen Mile Creek
- Emery Park
- Isle View
- Sergeant Mark A. Rademacher Memorial Park
- Sprague Brook
- Knox Farm State Park

### Monroe County:

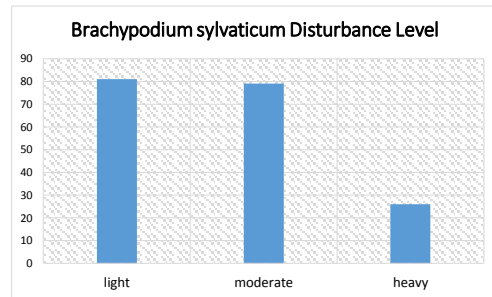
- Northampton Park
- Black Creek Park
- Oatka Creek Park
- Durand Eastman Park
- Mendon Ponds Park



## 2017 Data

---

- ❖ iMap Bulk upload around March 2018
- ❖ Tompkins County- seeding 6/27 until 7/18 (end of surveys)
- ❖ WNY- saw flowering 7/24
- ❖ Letchworth- seeding much earlier in June
- ❖ Majority of sites in areas of light to moderate disturbance



---

## 2018 Surveys


---

- ❖ Closer look at roads around Bergen Swamp
- ❖ Identify additional areas in Ithaca and the Finger Lakes
- ❖ Habitat Suitability modeling




# 2018 Management

---

- ❖ Looking into 3 locations:
    - ❖ Bergen Swamp
    - ❖ Letchworth State Park
    - ❖ Genesee County Park and Forest
  - ❖ Have 4 potential removal methods:
    - ❖ Manual Removal
    - ❖ Mechanical Removal
    - ❖ Herbicide Application
    - ❖ Mechanical Removal + Herbicide Application
- 

# Updates

---

- ❖ Willow: DEC *Brachypodium* Updates
    - ❖ Group input on project ideas
  - ❖ Andie: Bergen Swamp Updates and Future Plans
  - ❖ Meg: Letchworth & Parks Updates and Future Plans
- 

## Discussion & Next Steps

### ❖ 2018 Quarterly Meetings:

- ❖ Conference call April
- ❖ In-person meeting August
- ❖ Conference call November

### ❖ Website Needs

### ❖ Education and Outreach Needs

## Spread Prevention: Boot Brush Stations

**GIVE INVASIVE SPECIES THE BRUSH OFF**  
Shoes can carry the seeds of invasive plants. Please brush them off before entering and leaving this area.

**What's The Problem?**  
When you walk, your shoes and feet can pick up seeds of invasive plants. These seeds can travel to new places in your shoes, on your boots, or on your clothing. Invasive plants can spread through your shoes.

**Other Invasives On The Move...**

- Wild and Dirty (W.D.)**  
Wild and Dirty (W.D.) is a common invasive plant. It is a member of the Asteraceae family. It is a member of the Asteraceae family. It is a member of the Asteraceae family.
- Japanese Knotweed**  
Japanese Knotweed is a member of the Polygonaceae family. It is a member of the Polygonaceae family. It is a member of the Polygonaceae family.
- Wild Rose**  
Wild Rose is a member of the Rosaceae family. It is a member of the Rosaceae family. It is a member of the Rosaceae family.

**Play Clean Go**  
**STOP INVASIVE SPECIES IN YOUR TRACKS.**  
Play Clean Go  
Clean Your Gear Before Entering And Before Leaving This Site

Logos for various organizations are at the bottom.