

WNY PRISM FALL PARTNER MEETING 2017

Thursday, October 5, 2017

Iroquois National Wildlife Refuge

9:00 – 11:00 am



PRISM News & Updates

Staff

- Invasive Species Management Assistants (finished up)
- ESF/DEC Survey & Monitoring Intern (finished up)
- Education & Outreach Assistant finishes next week (10/13)
- Hired Project Manager – Lucy Nuessle
- Currently hiring Slender False Brome Manager

Program

- WNY PRISM NCTE was approved by DEC – funding through 2018

PRISM News & Updates

Staff

- Invasive Species Management Assistants finished up
- Education & Outreach Assistant finishes next week (10/13)
- Hired Project Manager – Lucy Nuessle
- Currently hiring Slender False Brome Manager

Program

- WNY PRISM NCTE was approved by DEC – funding through 2018



2017 Field Season – removal projects

- Niagara Escarpment Preserve
- Seneca Bluffs
- Audubon Community Nature Center
- Tifft Vernal Pools
- Woodlawn Beach State Park
- North Tonawanda Audubon Nature Preserve
- College Lodge
- Bergen Swamp
- Niagara County Knotweed



2017 Field Season – volunteer workdays



- Common buckthorn removal at North Tonawanda Audubon Nature Preserve
- Mugwort removal at Kenneglenn
- Yellow flag iris removal at Fuhrman Fen
- Japanese barberry & multi-flora rose at Franklin Gulf County Park
- Native planting at Seneca Bluffs

2017 Field Season - outreach

- Party for the Planet – Buffalo Zoo
- Farmers' Markets
 - Lockport
 - Salamanca
 - Genesee County
 - Hamburg
 - Alfred
- Orleans County Fair
- Insectival – Tifft
- Clarence Hollows Monarch Release
- Fall Festival Reinstein Woods
- ALB Tagging Events



iMapInvasives

- 695 Observations
- 8 Counties
- 59 Species
- WNY PRISM – 9 projects



WNY PRISM Crew surveys Chautauqua Watershed Conservancy Greenway Outlet Preserve.
Photo Credit: WNY PISM.

Early Detection Program

- 2nd year monitoring
- 16 Sites
- 2 new sites in 2017
 - 1 Japanese Stiltgrass
 - 1 Water Hyacinth
- Sites clear, with exceptions for slender false brome and new sites

2017 Early Detection Monitoring Sites				
	Species	Common Name	First Observed	County
5	<i>Eichhornia crassipes</i>	Water Hyacinth	1/1/2000	Niagara
6	<i>Eichhornia crassipes</i>	Water Hyacinth	9/24/2011	Erie
7	<i>Eichhornia crassipes</i>	Water Hyacinth	8/7/2014	Erie
8	<i>Eichhornia crassipes</i>	Water Hyacinth	8/7/2014	Erie
9	<i>Eichhornia crassipes</i>	Water Hyacinth	8/7/2014	Eire
10	<i>Eichhornia crassipes</i>	Water Hyacinth	9/1/2015	Niagara
11	<i>Eichhornia crassipes</i>	Water Hyacinth	9/8/2017	Erie
12	<i>Microstegium vimineum</i>	Japanese Stiltgrass	7/1/2016	Erie
13	<i>Microstegium vimineum</i>	Japanese Stiltgrass	8/22/2005	Erie
14	<i>Persicaria perfoliata</i>	Mile-a-minute vine	9/3/2008	Cattaraugus
15	<i>Pistia stratiotes</i>	Water Lettuce	3/5/2010	Erie
16	<i>Pistia stratiotes</i>	Water Lettuce	1/1/2011	Erie

Slender False Brome

- Melissa Rivelis and Chenga Drury – ESF/DEC Invasive Species Monitoring Interns



Slender false brome survey interns at Drew's Nature Preserve. Photo Credit: WNY PISM.

WNY PRISM Sites

Genesee County

- Genesee County Park & Forest
- Drew's Nature Preserve
- Iroquois National Wildlife Refuge
- Tonawanda Wildlife Management Area
- Darien Lake State Park
- Oak Orchard WMA
- Dewitt County Recreation Facility
- Trestle Park
- Bergen Swamp *

* Not surveyed as part of this project

Erie County

- Erie County Bureau of Forestry Park
- Akron Falls
- Boston Forest
- Chestnut Ridge
- Como Lake
- Eighteen Mile Creek
- Emery Park
- Isle View
- Sergeant Mark A. Rademacher Mem. Park
- Sprague Brook
- Knox Farm State Park

WNY PRISM Sites

Wyoming County

- Beaver Meadow Audubon Center
- Ghost Pond Preserve
- Rose Acres
- Silver Lake State Park
- Carlton Hill MUA
- Letchworth State Park**
- Genesee Valley Greenway State Park

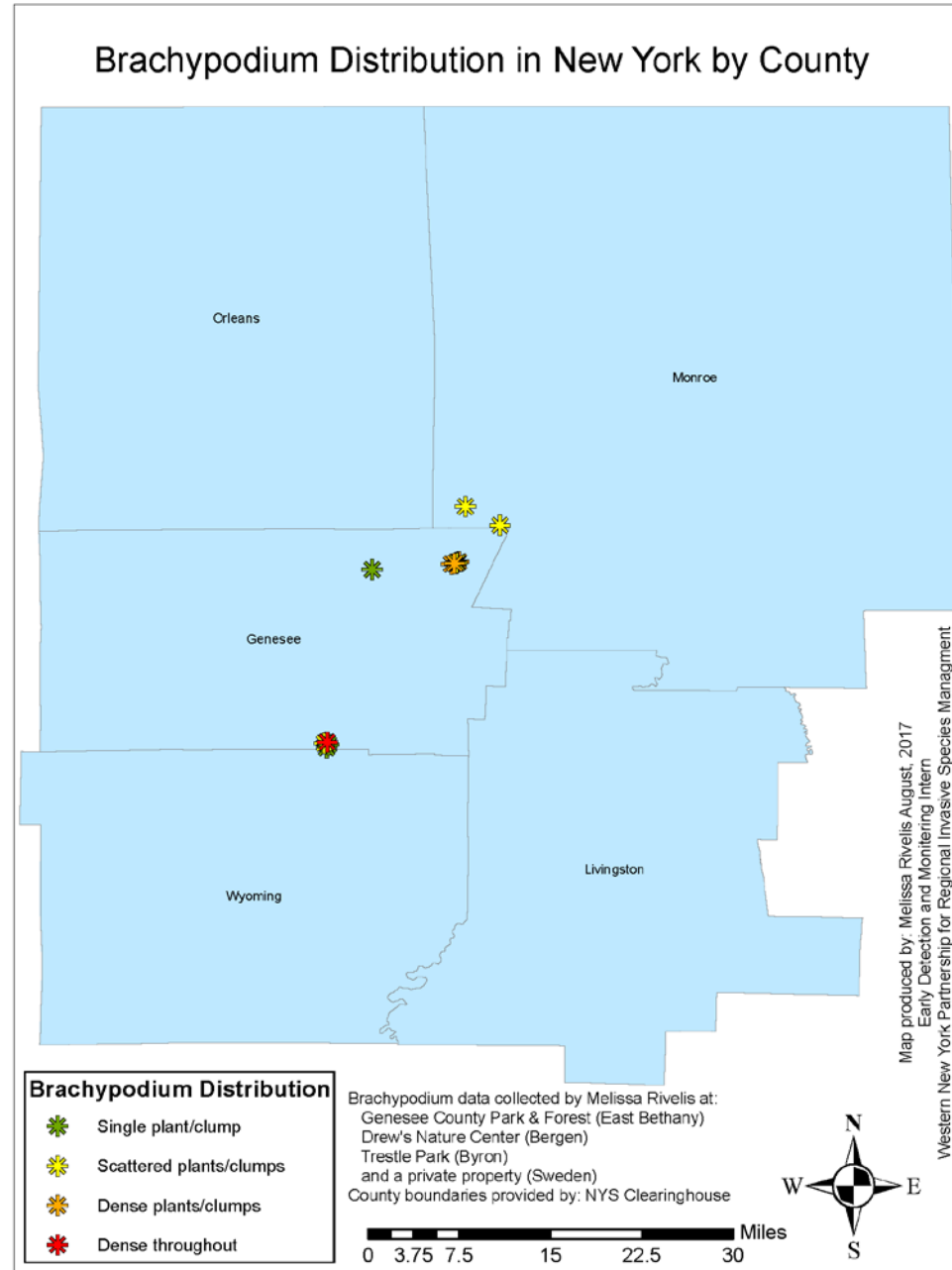
FL-PRISM Sites

Monroe County

- Northampton Park
- Black Creek Park
- Oatka Creek Park
- Durand Eastman Park
- Mendon Ponds
- GH-Private Landowner

** Surveyed by Parks, used project protocol

WNY PRISM Sites

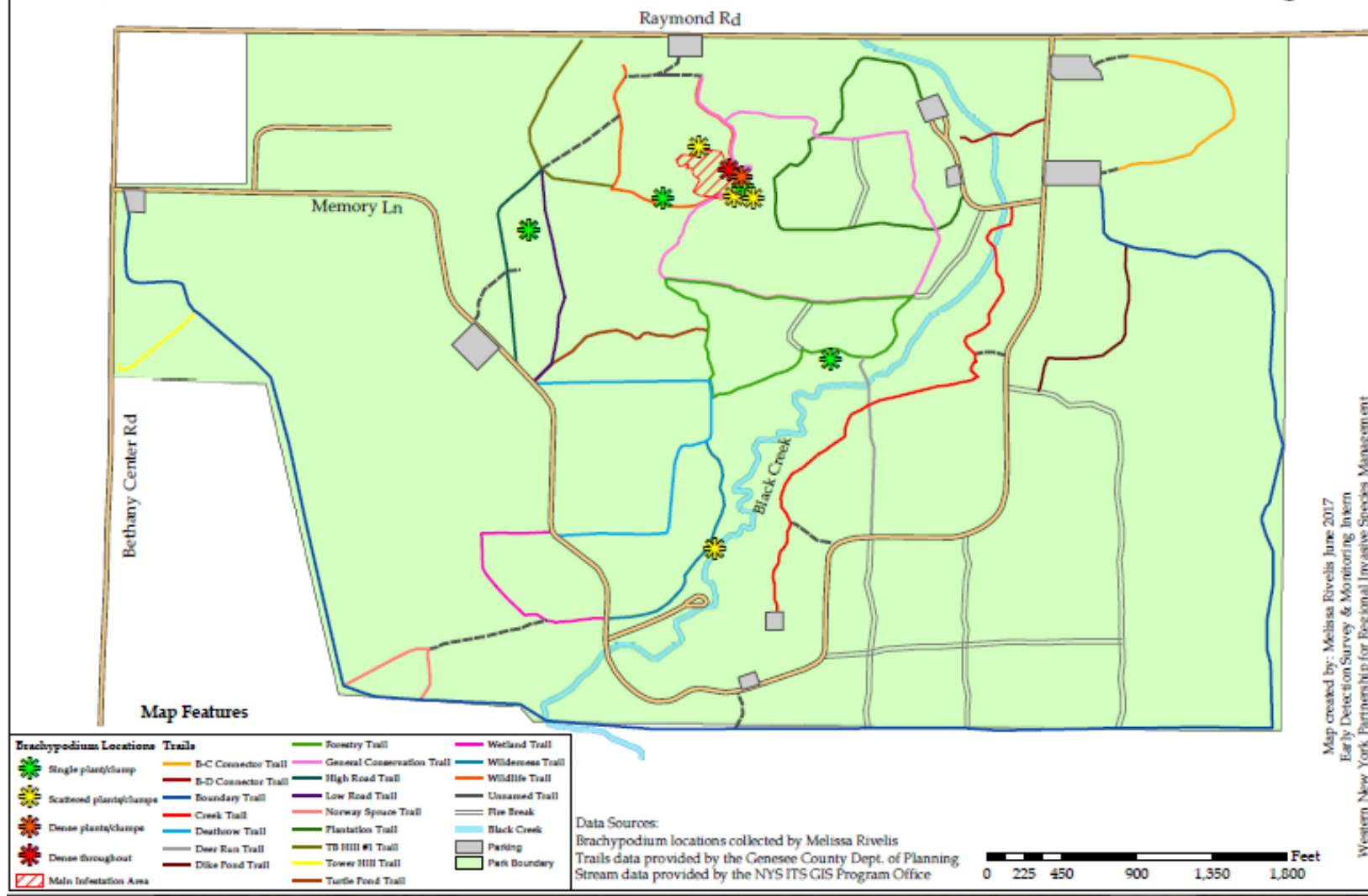


WNY PRISM Sites



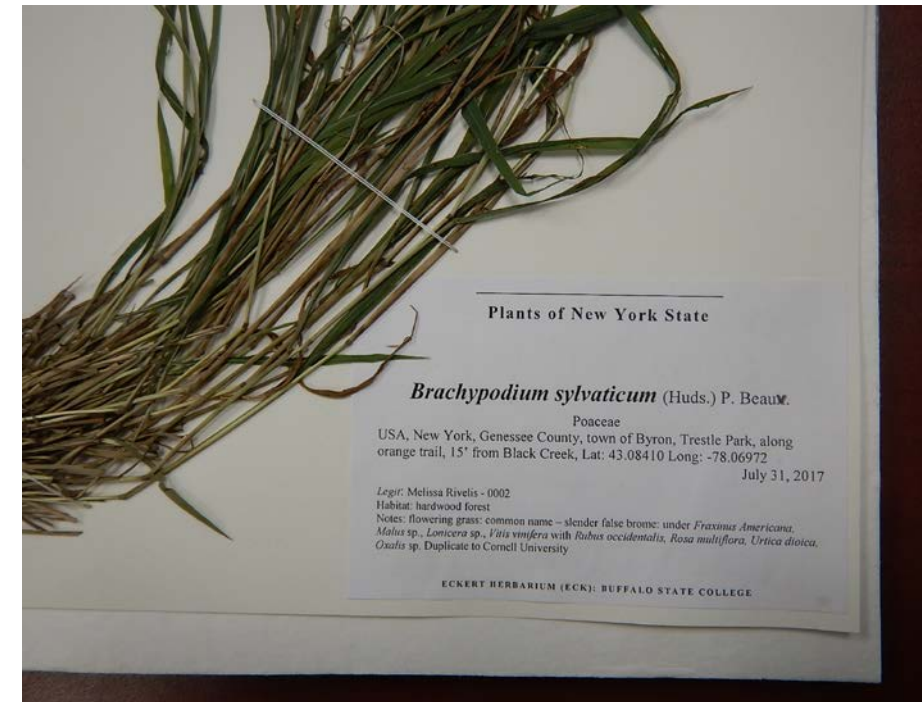
Brachypodium Infestation in Genesee County Park & Forest

11095 Bethany Ctr. Rd., E Bethany, NY 14054



Slender False Brome Working Group

- EPA – Great Lakes Restoration Initiative Grant: Great Lakes Slender False Brome Working Group
 - Improved coordination of efforts
 - Dedicated website
 - Improved information on presence and distribution
 - Identification (or development) of Best Management Practices
 - Rapid Response Protocol
 - Strategic Plan for management
 - Develop outreach materials
- Currently accepting applications for Project Manager



Herbarium specimens were collected at each site as part of 2017 summer surveys. Photo Credit: WNY PISM.

Upcoming

- Finalizing resources pdf's for contractors, native plant materials suppliers, and private lands programs
- Updates to species profiles on website
- Municipalities Toolkit
- Management Summaries
- Early Detection Program Report
- Approaching Region/Watch List Species
- TIS & AIS Working Groups – priority species tiers
- Management Planning Workshop
- 2018 Planning

Upcoming Meetings & Events

- WNY Emerald Ash Borer Taskforce Meeting
 - October 12, 2017; 9:00 am; Cheektowaga
- Great Lakes Restoration Conference – Healing Our Waters
 - October 17 – 19, 2017; Buffalo
- CCE In-Service – Invasive Species Track
 - November 13 – 15, 2017; Ithaca



New York State Updates



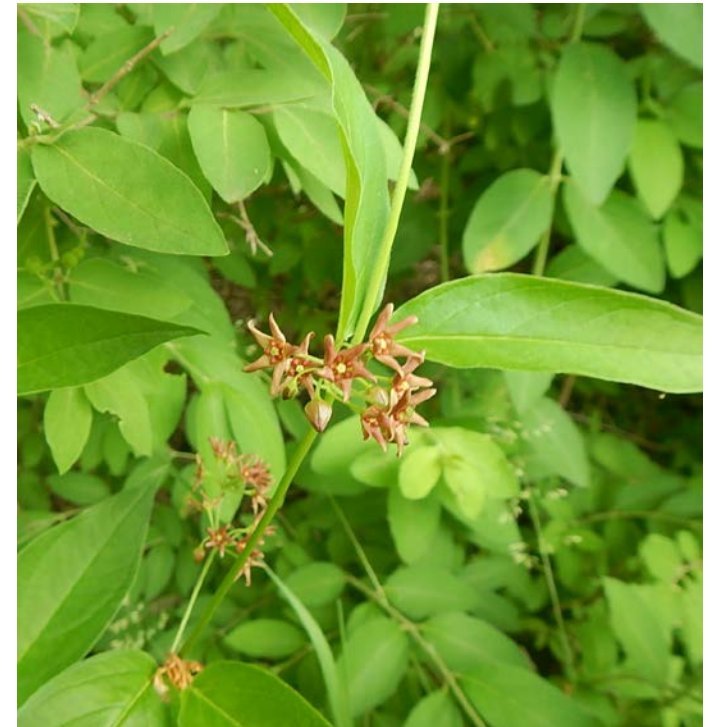
- Animal Assessments Report will be received this year
- USFS funds have been allocated to support Kudzu management – plans are still forming
- Hydrilla control efforts continue in the Croton River
 - Treatment expected later this month
 - Continuing surveys
 - Outreach has targeted yacht clubs

Invasive Species Research Institute



- New Post-Doc, Jennifer Lynn Price Tack, has started and will be working on prioritization and modeling
- Held eDNA workshop last month with over 80 attendees
- Biocontrol for swallow-wort has been approved
- Climate change issues have been at the forefront
- Please make updates to the expert database and provide feedback to ISRI

www.nyisiri.org



iMapInvasives



- iMap version 3
 - Contractor selected, work to begin soon
 - NY User Interface Review Team formed
- Prioritization
 - Species Tiers
 - Spatial Models – combining ecological significance with risk of spread
- Data Contributions
 - 4400 reports for 164 species
 - 2700 from mobile app, 370 contributors
 - 750 plant assessments



Statewide PRISM Updates

- APIPP
 - Released series of videos on management – phragmites and japanese knotweed released in September
 - Continue to partner with Paul Smith's College Adirondack Aquatic Invasive Species Prevention Program, successfully intercepted hydrilla on July 29
- CAP-MO
 - Giant hogweed removal – 2 sites, 122 plants (down from 182 in 2016)
 - Starry stonewort confirmed in north end of PRISM
 - Staff included 2 watercraft stewards, 1 E&O, AIS Coordinator, and will be hiring a TIS
- CRISP
 - ALB Outreach
 - Mile-a-minute found within the park, did a mailing to 6200 residents, did pulls on all nine properties and surveyed adjacent areas
 - Beginning Strategic Planning

Statewide PRISM Updates

- FL-PRISM
 - Collaborated to remove 22,000 pounds of water chestnut
 - Received funding from GLRI-EPA for Starry Stonewort Collaborative
- LIISMA
 - Josh Rudder has joined LIISMA as the new coordinator
- LH-PRISM
 - Treating multiple *salvia glutinosa* (sticky sage) populations
 - Early detection/rapid response crew completed treatment of slender false brome, small carpetgrass, and silver vine
- SLELO
 - Cultural impact study has been launched
 - Rusty crayfish found in Oneida Lake
 - Continuing focus on eDNA program/collection efforts