

WNY PRISM

Fall Partner Meeting 2021



www.wnyprism.org

Meeting Agenda

1:00 – 3:30 pm

1:00 – Tifft Restoration Tour w/ Zach Goodrich

2:00 – WNY PRISM News & Updates

2:30 – Partner Updates & Discussion

2:50 – Guest Speaker: Nate Drag, Volunteer Recruitment,
Retention and Management



NEW YORK STATE
INVASIVE SPECIES
MANAGEMENT



Welcome & Introductions

Cecilia Pershyn

Education and Outreach Program Manager

pershycm@buffalostate.edu



Spotted Lanternfly

STATUS

- Several infestations have been discovered in NYS.
 - Ithaca – Tompkins County
 - Broome, Ulster, Orange, Rockland, Bronx, New York, Queens, Richmond (Staten Island) and Kings Counties.
- Nearest infestation is Cameron County, PA (south of McKean)
- NYS efforts involve DAM-led surveys, roadside check points, outreach, and regulations.

MANAGEMENT

- Surveys (Tree of Heaven)
- Traps
- Report to Dept. of Ag and Markets.

Report Spotted Lanternfly – spottedlanternfly@agriculture.ny.gov



Goatsrue

(*Galega officinalis*)

IDENTIFICATION

- Herbaceous, shrub-like perennial legume.
- 2-6 ft tall.
- Leaves alternate and pinnately compound, 6-10 pairs of leaflets.
- Flowers white, blue or purple, present June – October.

THREAT

- High tolerance for wide range of soils.
- Spreads quickly – produces a lot of seed that is easily transported by water and human aided pathways.
- Toxic to humans and livestock.

SIMILAR SPECIES

- Various vetches



Goatsrue

(*Galega officinalis*)



MANAGEMENT

- Manual removal for small, isolated populations.
- Herbicide for large infestations.
- Mechanical (mowing) may facilitate herbicide treatment and may reduce spread with proper timing.
- Due to staggered germination and flowers, multiple treatments are needed each year.

STATUS

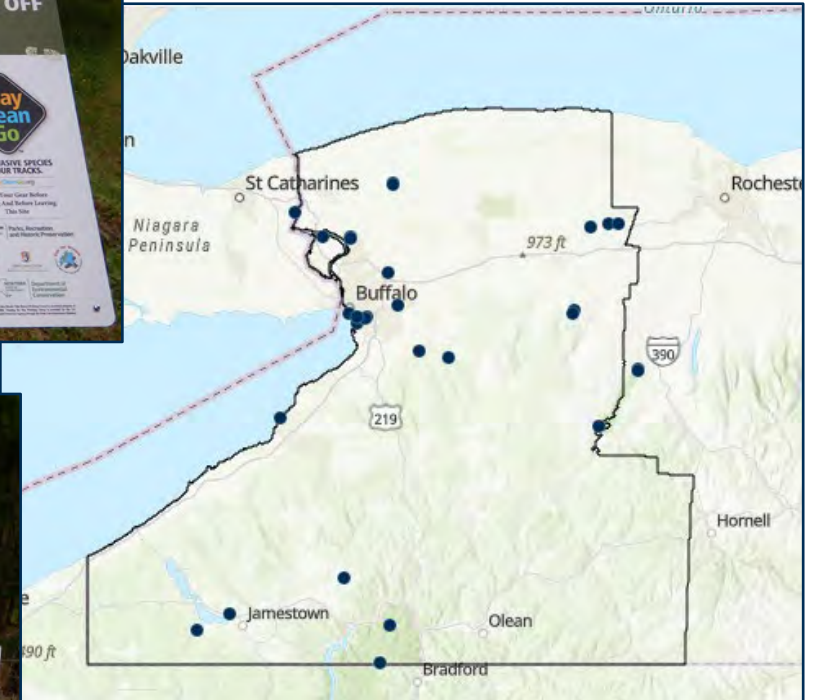
- Present in Bradford, PA (McKean County) – just south of NY/PA Line
 - Near Allegany State Park, along Tunungwant Creek.
- Priority management target for the Allegheny Plateau Invasive Plant Management Area.
- High likelihood of establishment in WNY PRISM.

PATHWAYS

- Contaminated soil/fill
- Seed is spread by mowing and water.

Boot Brush Stations

- 34 Boot Brush Stations Installed since 2016.
- 6-8 available for 2022.
- WNY PRISM provides:
 - All supplies including lumber and hardware.
 - Available to pick up at Home Depot of choice.
 - Installation instructions.
 - Sign – design, purchase, shipping.
- Partner agrees to:
 - Pick up supplies from Home Depot of choice.
 - Timely installation.
 - Photos and GPS location for BBS.
 - Maintain BBS.





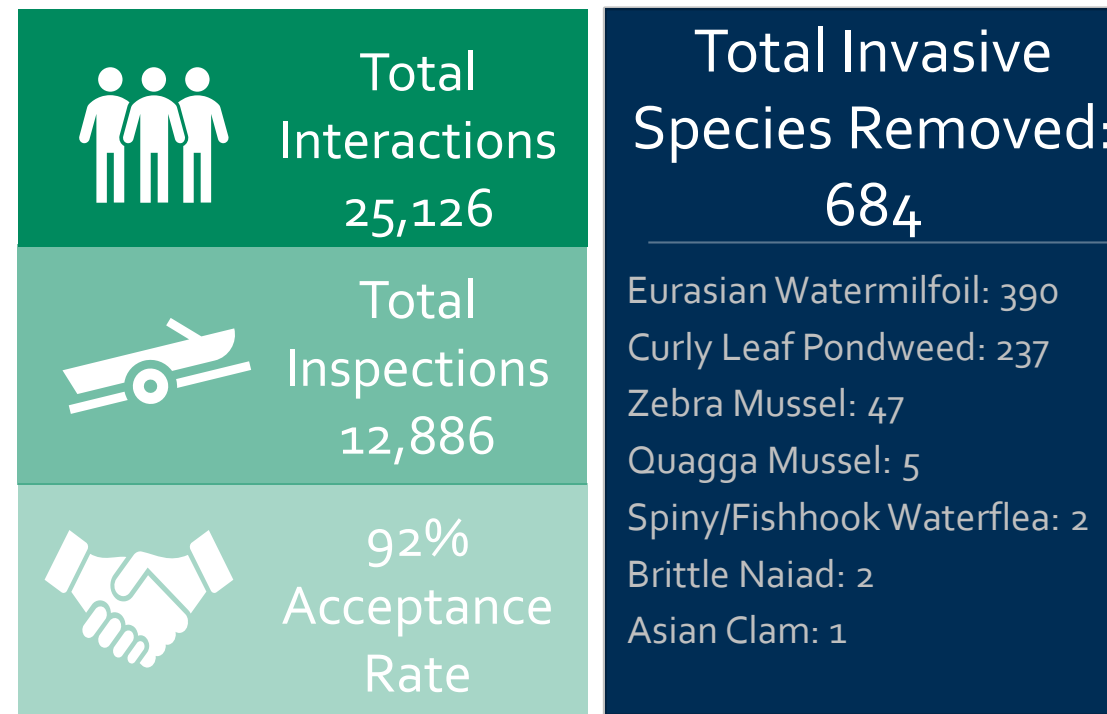
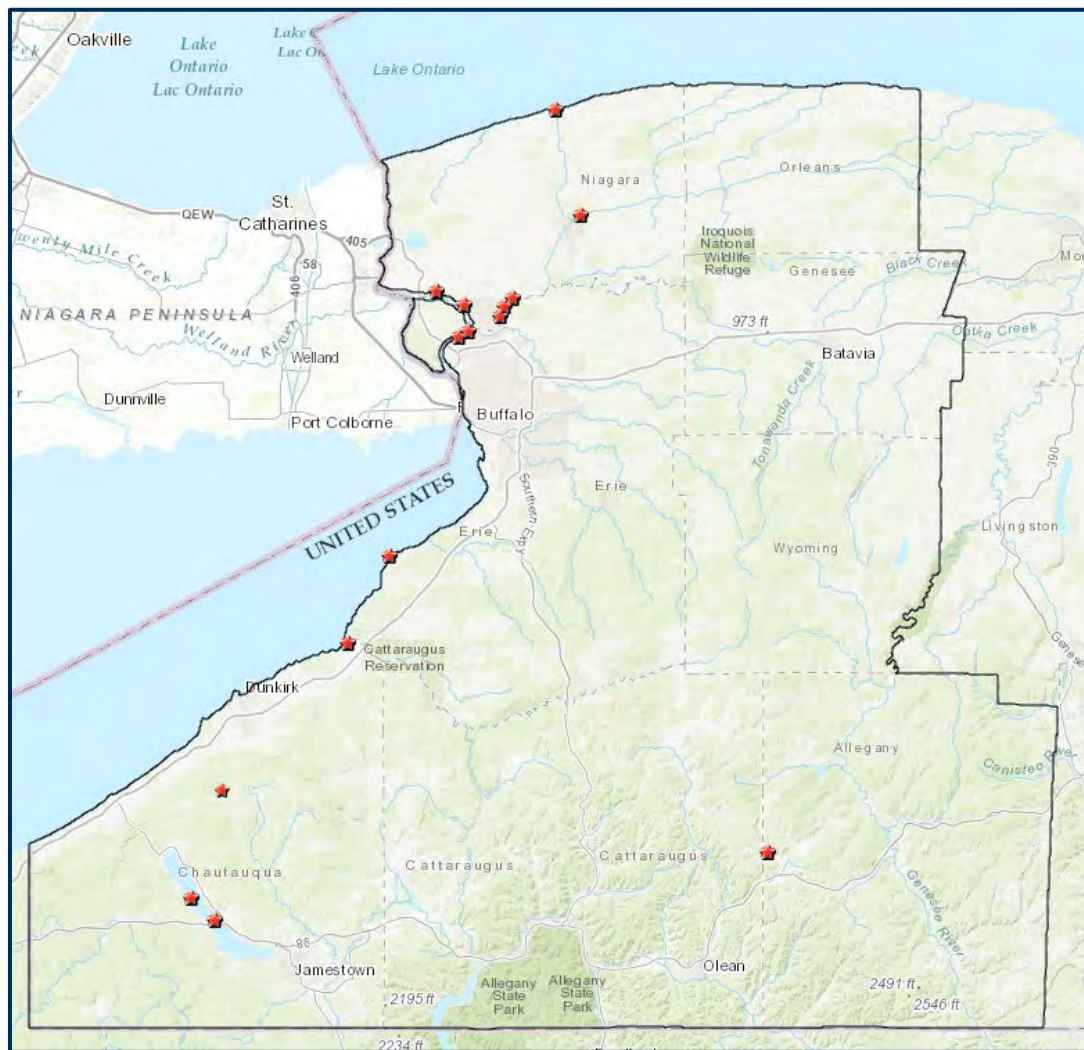
AQUATIC PROGRAMS

Nicole Smeenck

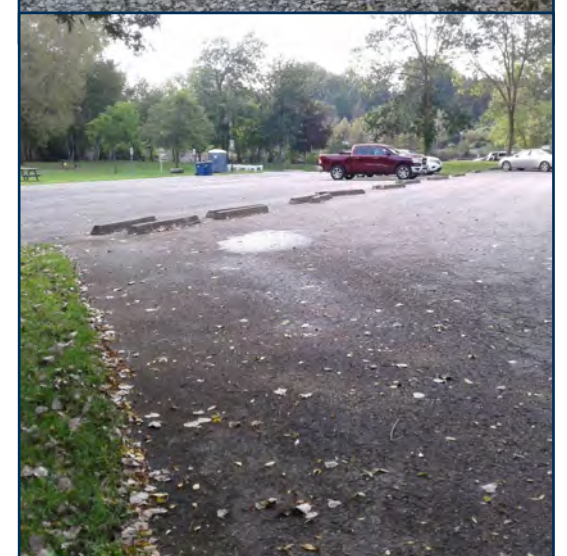
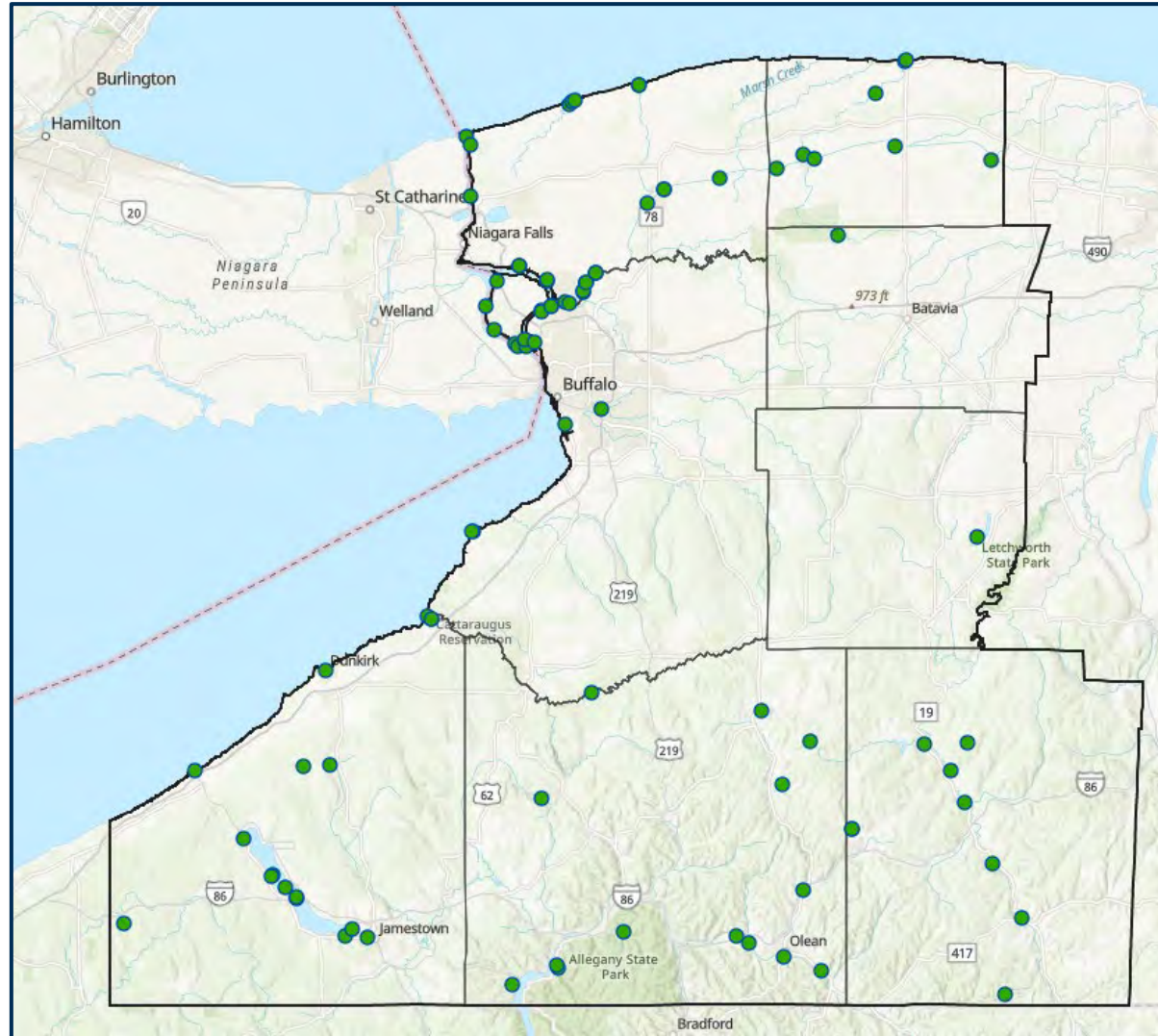
Aquatic Invasive Species Program Manager

smeencknm@buffalostate.edu

Watercraft Inspection Steward Program

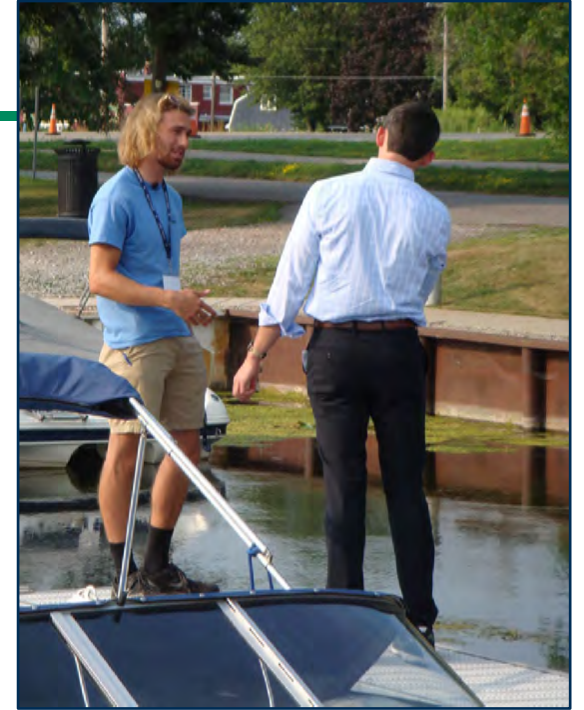


Survey of Public Launches



Hydrilla Outreach Efforts

- New infestation of *Hydrilla* found in Gratwick-Riverside Marina
- Stewards were there for the last three weeks of the season, Thursday and Friday evenings, as well as all day Saturday and Sunday
- Talked to 73 groups of boaters



Invasive Species Surveys

- Assisted US Army Corp of Engineers with *Hydrilla* surveys of Tonawanda Creek/Erie Canal.
- Assisted The Nature Conservancy with surveys of Buffalo Harbor as part of the Great Lakes Aquatic Nuisance Species Panel early detection and rapid response surveillance effort.
- Surveyed 1.75 miles of Cattaraugus Creek.
 - 2020 WISPA data showed several unreported species on retrieving boats – no species were found.



Water Chestnut Surveys

- Conewango Swamp Wildlife Management Area
 - 66 water chestnut plants pulled
- Cuba Lake
 - Surveyed by stewards, no plants found



AIS Pulls with Partners

Audubon Community Nature Center
Water Chestnut



Buckhorn Island State Park, OPRHP
European Frog-bit



Early Detection – Water Lettuce

- Ellicott Creek
 - 100+ plants removed over three surveys
 - No plants found on fourth survey
- Hyde Park Lake
 - 700 plants removed in 2020
 - No plants found in 2021
- Oppenheim Park
 - No plants found in 2021
- New population: Tonawanda Creek/Erie Canal
 - Removed 8 plants in late August
 - No plants found on second survey



Early Detection – Water Hyacinth



- No plants detected in:
 - Oppenheim Park
 - Unity Island
 - Ransom Creek
- Tonawanda Creek/Erie Canal
 - 15 plants removed
 - No plants detected on second survey

The background of the slide is a high-resolution image of the Earth as seen from space, showing swirling white clouds over a deep blue ocean. The horizon of the planet is visible on the right side of the frame.

TERRESTRIAL PROGRAMS

Brittany Hernon

Terrestrial Invasive Species Program Manager

hernonba@buffalostate.edu

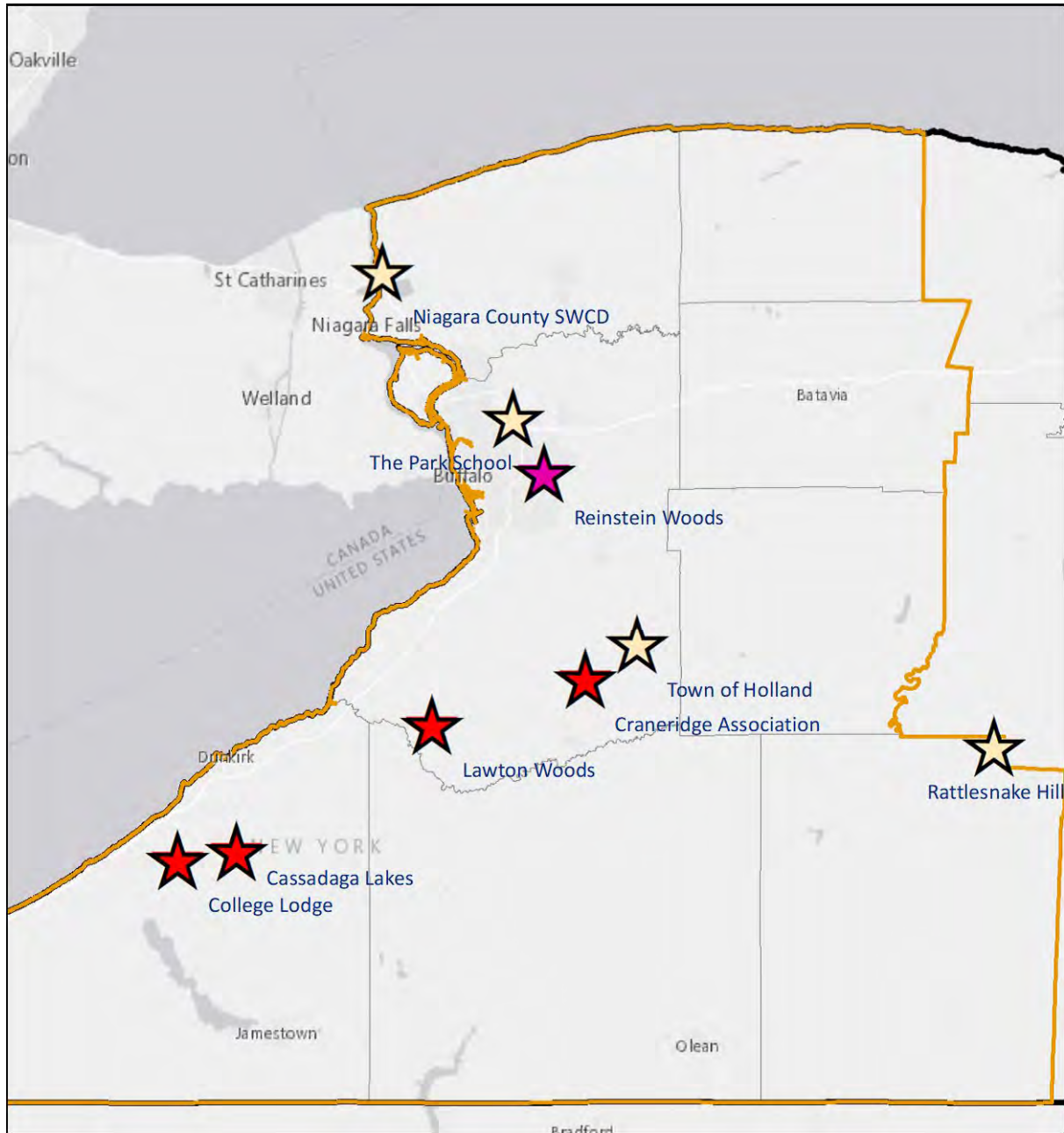
2021 Crew Assistance Program

- 17 proposals submitted, 9 selected.
- 4 Survey, 4 Management, 1 Management and Restoration.
- 1 Allegany County, 2 Chautauqua County, 5 Erie County and 1 Niagara County.



Invasive Species Management Assistants (ISMAs):
Jason Kappan, Lyndzie Vail and Aubrey Franks.

2021 Crew Assistance Program



Management

- Niagara County SWCD - knotweed treatment.
- Town of Holland - knotweed treatment.
- Rattlesnake Hill - honeysuckle, common buckthorn, autumn olive, multi-flora rose.
- The Park School – red swamp crayfish.



Management and Restoration

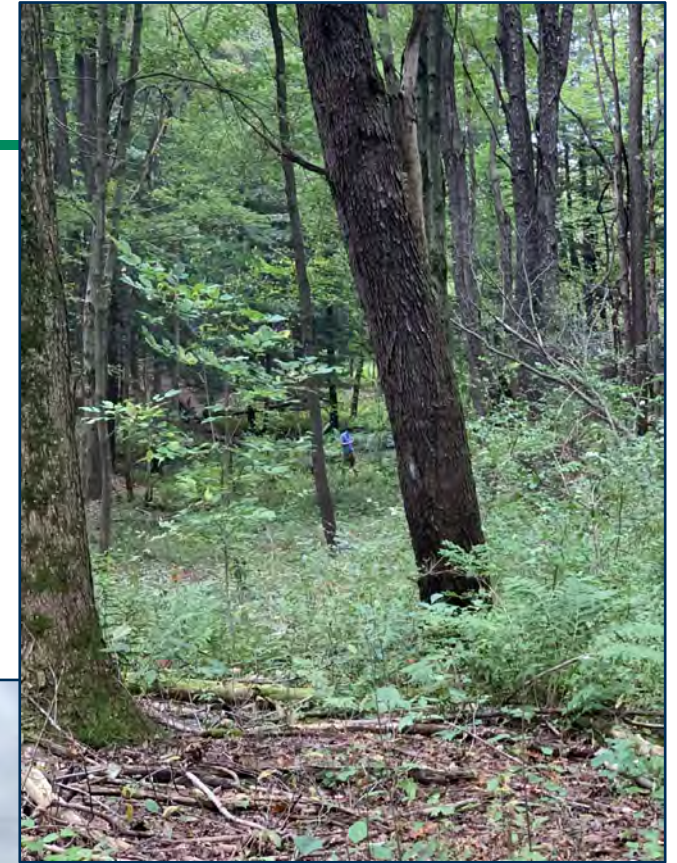
➤ Reinstein Woods - *Phragmites* treatment and native planting.



Photo credit: Reinstein Woods

Survey

- College Lodge
- Lawton Woods
- Craneridge Association
- Cassadaga Lakes



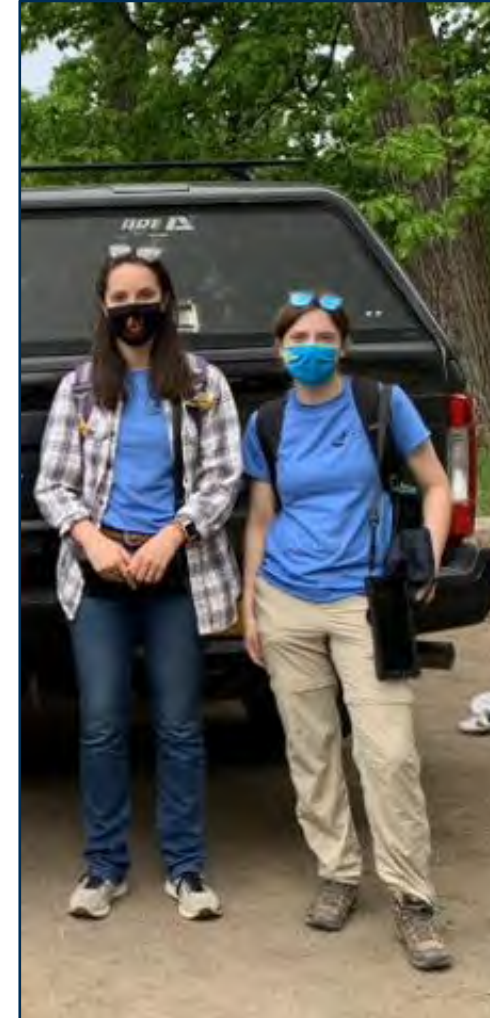
Additional Management Projects

- Tifft Mosquito Junction
- Houghton Preserve
- Riverwalk/Greenway Trail
- Seneca Bluffs



Early Detection – SFB & JSG

- Surveyed 24 sites and over 90 miles of trail for slender false brome and Japanese stiltgrass.
- 2 new Japanese stiltgrass sites found: Bailey Peninsula and West Falls Park. All plants removed. No new slender false brome sites.



Survey Technicians
Sonya Bayba and
Amanda Gabryszak.

Early Detection – SFB & JSG

- Carried out monitoring and management at 6 slender false brome and 15 Japanese stiltgrass sites, using integrated pest management.



Early Detection – SFB & JSG



Early Detection – Japanese Angelica Tree & Porcelain Berry

- 1 Japanese angelica tree site, Lake Erie State Park. Third year of treatment by the Crew, surveyed by NYS Parks early in the season.
- 1 porcelain berry site, Delaware Park. Removed in 2020 and 2021 by community scientist, also surveyed by WNY PRISM.



EDUCATION & OUTREACH

Cecilia Pershyn

Education and Outreach Program Manager

pershycm@buffalostate.edu

2021 Education and Outreach Events

- 40 total events; 15 events hosted by WNY PRISM
 - 12 presentations
 - 11 tabling events
 - 8 Walk and Talks
 - 5 volunteer workdays
 - 4 workshops
- 1034 direct contacts



Japanese Stiltgrass Volunteer Workdays



- Targeted sites along Cazenovia Creek in West Seneca
- Five workdays
- 45 volunteers/141 volunteer hours
- 17 bags of JSG removed



Pledge to Protect

I Pledge to Protect
my Lands



I Pledge to Protect
my Trees



I Pledge to Protect
my Waters



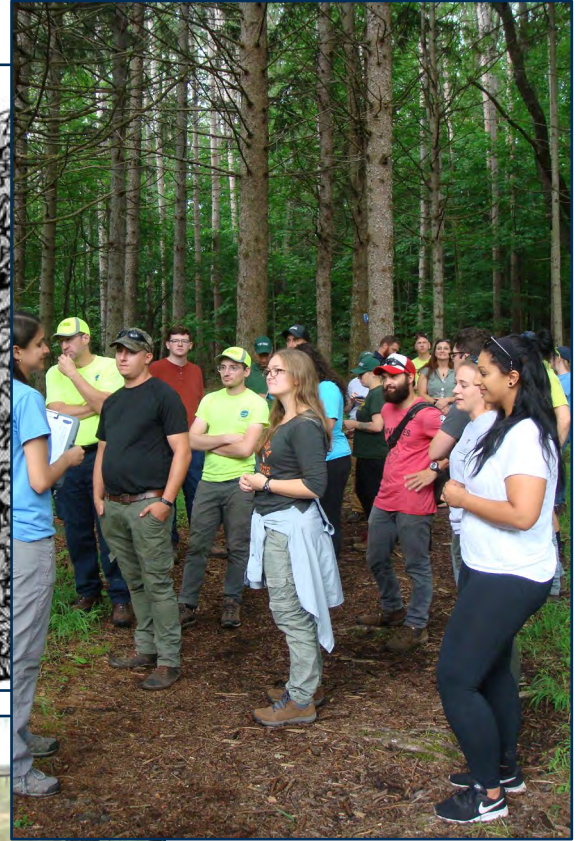
Education & Outreach Assistant



John Montgomery

Looking Forward

- Developing 2022 Annual Work Plan
 - Early Detection/Prevention
 - Prioritization
 - Management Planning
 - Community Science/Volunteerism
 - Behavior Change
- Crew Assistance Program
- Budget Amendment
 - New Staff Member – Field Operations
 - WNY Invasive Species Symposium





PARTNER UPDATES

Nate Drag, New York Sea Grant Great Lakes Literacy Specialist

No Such Thing as a Free Lunch: Challenges and Tips on Volunteer Recruitment, Retention, and Management

Volunteers and Community Scientists are an incredible resource for invasive species management, with the ability to greatly increase the scope and effectiveness of invasive species management projects. Whether you are looking for extra hands for a removal workday, extra eyes to survey forest pests, or looking for long-term project monitoring assistance, we all face barriers in our ability to leverage volunteers. Nate will provide valuable insight into the recruitment, engagement and retention of volunteers, lessons learned, and strategies for improving our programs. We will also look at how we can work together as a partnership to better use this resource and address barriers.

